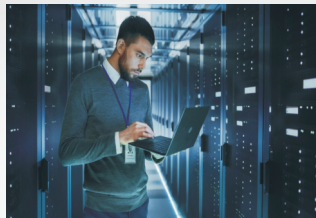




## DB-Aire In Row Series 50/60Hz

Precision Environmental Control Unit  
Cooling Capacity : 3 to 17 TR (12 to 60 kW)



R410A

**DUNHAM-BUSH**<sup>®</sup>

Products that perform...By people who care

# DB-AIRE IN ROW

## Precision Environmental Control Systems For Row-Based Cooling Solution

DB-AIRE IN ROW is another milestone in Dunham Bush DB-Aire series, providing a comprehensive cooling solution for a new generation of data centers. Offers a wide range of capacities in a highly aesthetic compact cabinet that equipped with advanced features on it.

Adopting a close-to-machine design concepts, DB-Aire IN ROW provides a cooling load close to the server heat source for effective and efficient thermal management. A highly efficient and precise temperature-humidity control, DB-AIRE IN ROW suitable for data center that demand for a high Tier class rating.

## GENERAL INFORMATION

### AIR COOLED DIRECT EXPANSION (DX) & CHILLED WATER SYSTEM

DB-Aire In Row available in 2 systems, Air Cooled DX and Chilled Water system. The nominal capacity range is 3 to 17 TR (12 to 60 kW) of cooling accordance to AHRI 1360 standard condition.

### VFD COMPRESSOR

DB-Aire In Row offers a Variable Frequency Drive (VFD) DC Scroll Compressor technology to satisfy the needs of high efficiency and reliable product controls.

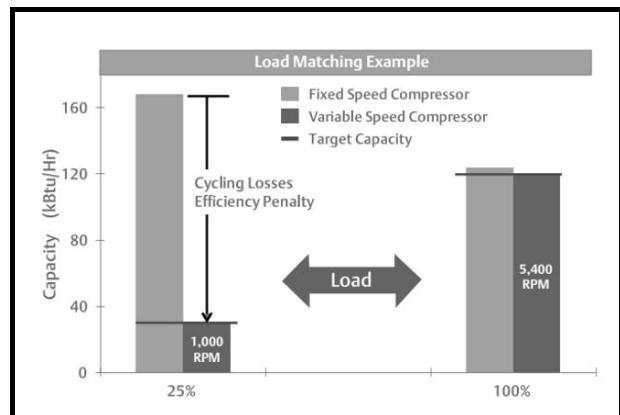


The capability to modulate compressor speed can precisely match the on-demand capacity while maintaining the optimum power usage.

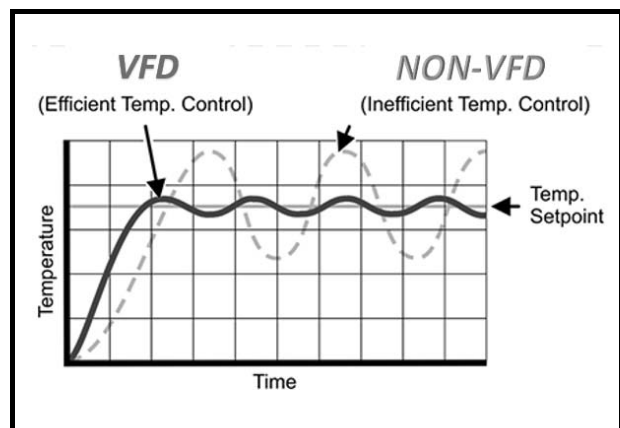
More energy saving can be expected especially during part load condition. Low start-up frequency will

significantly minimize the initial current peak that usually happen in normal fix speed compressor.

VFD Advantage 1 – Matching actual capacity needed thus optimize energy usage.



VFD Advantage 2 – Better temperature control compare to conventional fix speed control.



# GENERAL INFORMATION

## EC FAN

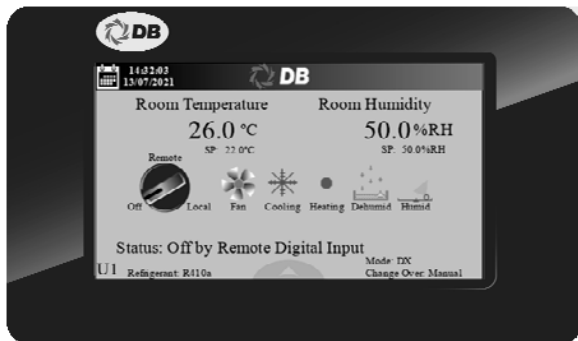
The indoor unit are equipped with electronically commutated (EC) compact axial fans to make sure the system is driven with lesser energy compare to the conventional AC motor type.



Capability to give higher part load efficiency due to the ability to precisely regulate the airflow according to the load demand makes EC fan is the right choice.

The EC fan's impellers were made of glass-fiber reinforced PA plastic and its housing was made of die-cast aluminium.

## TOUCH SCREEN CONTROLLER



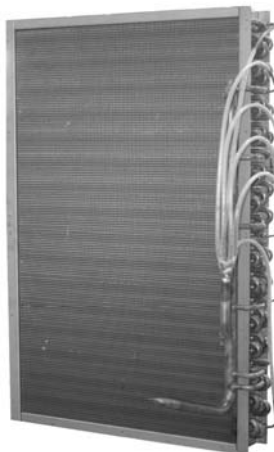
DB-Aire In Row is equipped with a colored touch screen controller for interactive controls and display. The 65k color display provides a high quality images and advanced features for user to conveniently navigate between various screens.

## COOLING COIL

Computer selected coil design, using interwoven coil surface increases unit efficiency at low loads.

Air is drawn through the coil at low velocity providing effective surface exposure with minimum turbulence.

This provides greater efficiency in the overall cooling and dehumidification process.



## FILTERS

The system shall be provided with disposable 2 inches (50 mm) deep with MERV8 rating filters for DBIR03/07V and DBIR08/10W. Then, disposable 2 inches (50 mm) deep with MERV8 rating filters for DBIR10/13V and DBIR 11/17W.



## ELECTRICAL HEATER

The one stage stainless steel finned tubular reheat coils provide ample capacity to maintain room dry bulb conditions during a system call for dehumidification. It gives an accurate controlled response to the requirements of the computer room. The heating elements are protected by thermal safety switches. The one stage of reheat create a noticeable lowering of energy use.



## ELECTRONIC EXPANSION VALVE (EEV)

The system shall be provided with Electronic Expansion Valve (EEV) for precise refrigerant control and highly responsive mechanism in adapting variable capacity operation, while maintain a constant superheat for efficient and reliable operation.



# NOMENCLATURE

## INDOOR UNIT

		1	2	3	4	5	6	7	8	9	10	11	12	13	14	15	16	17	18	19	20	21	22
String		D	B	I	R	0	3	V	A	U	B	D	N	N	N	N	N	N	E	N	N	N	N

**1 & 2 DB-AIRE**

**3 & 4 SERIES**  
IR = In Row

**5 & 6 MODEL TR**  
TR Std Airflow CFM (m<sup>3</sup>/h)  
Air Cooled DX  
03 2,250 (3,823)  
07 3,100 (5,267)  
10 4,800 (8,155)  
13 5,600 (9,514)  
Chilled Water  
08 3,100 (5,267)  
10 3,600 (6,116)  
11 4,600 (7,815)  
17 5,600 (9,514)

**7 REFRIGERANTS**  
V = R410A VFD Compressor  
W = Chilled Water

**8 & 9 VOLTAGE**  
AU = 380-415V/3ph/50Hz  
EF = 380V/3ph/60Hz

**10 PIPE CONNECTION**  
B = Standard Bottom Pipe Connection

**11 DRAIN PAN**  
D = Standard GI Painted  
T = Stainless Steel

**12 HUMIDIFIER**  
H = Humidifier Selected  
N = Not Selected

**13 AIR DISCHARGE**  
B = Horizontal Air Flow with Baffle  
N = Standard Horizontal Air Flow without Baffle

**14 EVAPORATOR CONTROL**  
N = Standard EEV  
L = Standard EEV + Liquid Line Solenoid Valve (LLSV)

**22 OTHER SPECIAL OPTION**  
Q = Special Option  
N = Not Selected

**21 BMS COMMUNICATION OPTIONS**  
N = Standard unit with one ModBus RTU RS485

**20 LOW AMBIENT KIT**  
N = Not Selected  
L = Selected (Down to 32F Temp.)

**19 FUTURE OPTION**  
N = Not Selected

**18 HEATER**  
E = Standard Electric Heater

**17 SMOKE DETECTOR**  
S = Smoke Detector  
N = Not selected

**16 UNDER FLOOR WATER DETECTOR**  
P = Pinhole Probe  
N = Not selected

**15 REMOTE TEMPERATURE SENSOR**  
N = Not Selected  
R = Selected (Max qty 6)

## OUTDOOR UNIT (For Air Cooled DX-System)

		1	2	3	4	5	6	7	8	9	10	11	12	13
String		D	B	R	C	0	4	G	A	U	A	L	1	N

**1,2,3 & 4 AIR COOLED CONDENSER**

**5 & 6 MODEL**  
04  
06  
08  
10  
11  
13  
17  
20  
26  
30  
34  
40  
44

**7 REFRIGERANT**  
G = R410A

**13 OTHER SPECIAL OPTION**  
Q = Special Option  
N = Not selected

**12 REFRIGERATION CIRCUIT(S)**  
1 = 1-Circuit

**11 BLACK PAINT (EXTERNAL) OPTION**  
L = Black Paint on Unit External  
N = Not selected

**10 CONDENSER FIN OPTIONS**  
A = Standard Aluminum  
H = Hydrophilic  
C = Copper Fin

**8 & 9 VOLTAGE OPTIONS**  
AU = 380-415V/3ph/50Hz  
EF = 380V/3ph/60Hz



# PERFORMANCE AND TECHNICAL DATA

## AIR COOLED DX SYSTEM

MODEL			DBIR03V	DBIR07V	DBIR10V	DBIR13V
<b>Rating 1</b> ID=DB95.0F/ WB67.7F/ 24%RH OD=DB95.0F AHRI 1360 rating condition	<b>Total Cooling Capacity</b>	MBH (kW)	43.6 (12.8)	85.2 (25.0)	123.2 (36.1)	157.4 (46.1)
	<b>Sensible Cooling Capacity</b>	MBH (kW)	43.6 (12.8)	85.2 (25.0)	123.2 (36.1)	157.4 (46.1)
	<b>Sensible Heat Ratio (SHR)</b>		1	1	1	1
<b>Rating 2</b> ID=DB98.6F/ WB70.0F/ 24%RH 113.0F Cond. Temp.	<b>Total Cooling Capacity</b>	MBH (kW)	47.5 (13.9)	90.1 (26.4)	129.4 (37.9)	164.5 (48.2)
	<b>Sensible Cooling Capacity</b>	MBH (kW)	47.5 (13.9)	90.1 (26.4)	129.4 (37.9)	164.5 (48.2)
	<b>Sensible Heat Ratio (SHR)</b>		1	1	1	1
<b>Compressor</b> (VFD)	<b>Number of Compressor</b>		1	1	1	1
	<b>Rating 1 Power Input</b>	kW	3.4	6.6	9.1	11.9
	<b>Rating 2 Power Input</b>	kW	3.1	6.0	8.6	10.9
	<b>Hot Gas; Liquid Lines, 50/60Hz</b>	In	1/2 ; 3/8	7/8 ; 5/8	7/8 ; 5/8	7/8 ; 5/8
<b>EC Fan</b>	<b>Fan Qty</b>		4	6	8	10
	<b>Air Volume (ESP 0 inwg)</b>	CFM (m <sup>3</sup> /h)	2,250 (3,823)	3,100 (5,267)	4,800 (8,155)	5,600 (9,514)
	<b>Fan Size</b>	mm	200	200	200	200
<b>Evap Coil DX</b>	<b>Face Area</b>	ft <sup>2</sup> (m <sup>2</sup> )	5.7 (0.5)	5.7 (0.5)	11.3 (1.1)	11.3 (1.1)
	<b>Face Velocity</b>	FPM (m/s)	397 (2.0)	547 (2.8)	424 (2.2)	494 (2.5)
	<b>Condensate Drain I.D</b>	In	7/8	7/8	7/8	7/8
<b>Air Filter</b>	<b>Efficiency Rating</b>		MERV 8	MERV 8	MERV 8	MERV 8
	<b>Thickness</b>	In	2	2	2	2
	<b>Type</b>		Disposable	Disposable	Disposable	Disposable
<b>Reheat (Electric)</b>	<b>Capacity</b>	MBH (kW)	6.1 (1.8)	20.5 (6.0)	20.5 (6.0)	20.5 (6.0)
<b>Steam Humidifier (Optional)</b>	<b>Capacity (max.)</b>	lbs/hr (kg/hr)	3.3 (1.5)	3.3 (1.5)	3.3 (1.5)	3.3 (1.5)
	<b>Power Input (max.)</b>	kW	1.1	1.1	1.1	1.1
<b>Sound Pressure Level (at 1m distance)</b>		dBa	81	83	85	86
<b>Electrical Data (380-415V/3Ph/50Hz)</b> *Rating 1 Condition		RLA	21.4	33.9	48.0	63.9
		MCA	24.0	38.1	53.5	72.3
		MFS	40	60	80	110
<b>Electrical Data (380V/3Ph/60Hz)</b> *Rating 1 Condition		RLA	21.4	33.9	48.0	63.9
		MCA	24.0	38.1	53.5	72.3
		MFS	40	60	80	110

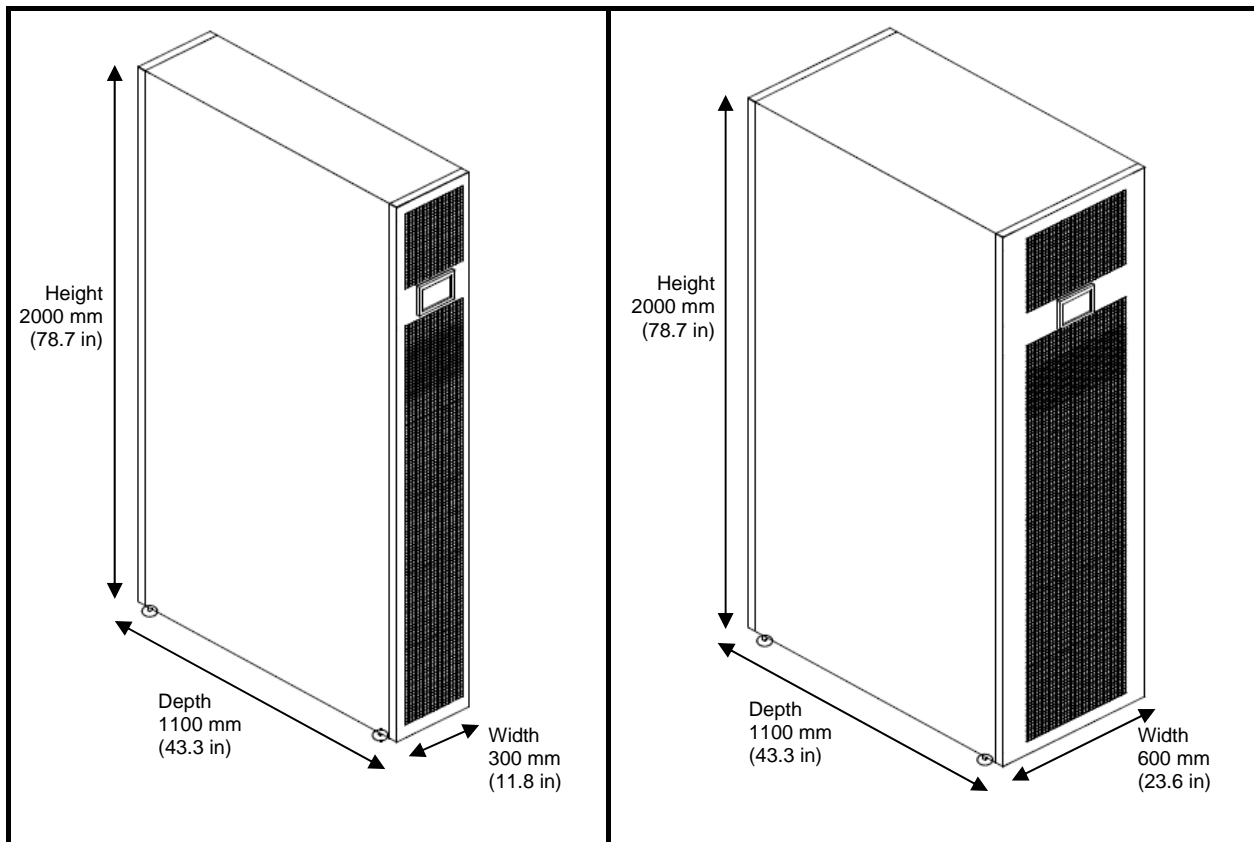


# PERFORMANCE AND TECHNICAL DATA

## CHILLED WATER SYSTEM

Model		DBIR08W	DBIR10W	DBIR11W	DBIR17W	
<b>RATING 1</b> ID=DB95.0F/ WB67.7F/ 24%RH EWT/LWT= 50.0F/62.0F AHRI 1360 rating condition	<b>Total Cooling Capacity</b>	MBH (kW)	102.6 (30.1)	115.4 (33.8)	137.3 (40.2)	205.0 (60.1)
	<b>Sensible Cooling Capacity</b>	MBH (kW)	102.6 (30.1)	115.4 (33.8)	137.3 (40.2)	205.0 (60.1)
	<b>Sensible Heat Ratio (SHR)</b>		1	1	1	1
	<b>Water Flow Rate</b>	GPM (m <sup>3</sup> /hr)	17.1 (3.9)	19.2 (4.4)	22.9 (5.2)	34.2 (7.8)
	<b>Water Pressure Drop</b>	PSI (kPa)	5.0 (34.4)	6.1 (41.8)	3.6 (24.5)	5.1 (35.3)
EC Fan	<b>Fan Qty</b>		5	6	8	10
	<b>Air Volume (ESP 0 inwg)</b>	CFM (m <sup>3</sup> /h)	3,100 (5,267)	3,600 (6,116)	4,600 (7,815)	5,600 (9,514)
	<b>Fan Size OD</b>	mm	200	200	200	200
Coil (Chilled Water)	<b>Face Area</b>	ft <sup>2</sup> (m <sup>2</sup> )	6.6 (0.6)	6.6 (0.6)	10.3 (1.0)	10.3 (1.0)
	<b>Face Velocity</b>	FPM (m/s)	472 (2.4)	549 (2.8)	446 (2.3)	543 (2.8)
	<b>Condensate Drain I.D</b>	Inch	7/8	7/8	7/8	7/8
Chilled Water Control	<b>3-Way Modulating Valve, Size</b>	DN, mm	25	25	40	40
		Kv, m <sup>3</sup> /h	10	10	16	16
Air Filter	<b>Efficiency Rating</b>		MERV 8	MERV 8	MERV 8	MERV 8
	<b>Thickness</b>	In	2	2	2	2
	<b>Type</b>		Disposable	Disposable	Disposable	Disposable
Reheat (Electric)	<b>Capacity</b>	MBH (kW)	10.2 (3.0)	10.2 (3.0)	20.5 (6.0)	20.5 (6.0)
Steam Humidifier (Optional)	<b>Capacity (max.)</b>	lbs/hr (kg/hr)	3.3 (1.5)	3.3 (1.5)	3.3 (1.5)	3.3 (1.5)
	<b>Power Input (max.)</b>	kW	1.1	1.1	1.1	1.1
<b>Sound Pressure Level (at 1m distance)</b>		dBA	83	84	85	86
Electrical Data (380-415V/3Ph/50Hz) *Rating 1 Condition		RLA	21.6	23.7	25.9	35.4
		MCA	24.3	27.0	29.6	40.7
		MFS	40	40	50	65
Electrical Data (380V/3Ph/60Hz) *Rating 1 Condition		RLA	21.6	23.7	25.9	35.4
		MCA	24.3	27.0	29.6	40.7
		MFS	40	40	50	65

# DIMENSIONAL AND WEIGHT DATA



Model	Weight (kg)	Model	Weight (kg)
DBIR03V	230	DBIR10V	320
DBIR07V	255	DBIR13V	335
DBIR08W	180	DBIR11W	270
DBIR10W	190	DBIR17W	290

# CONDENSER SELECTION

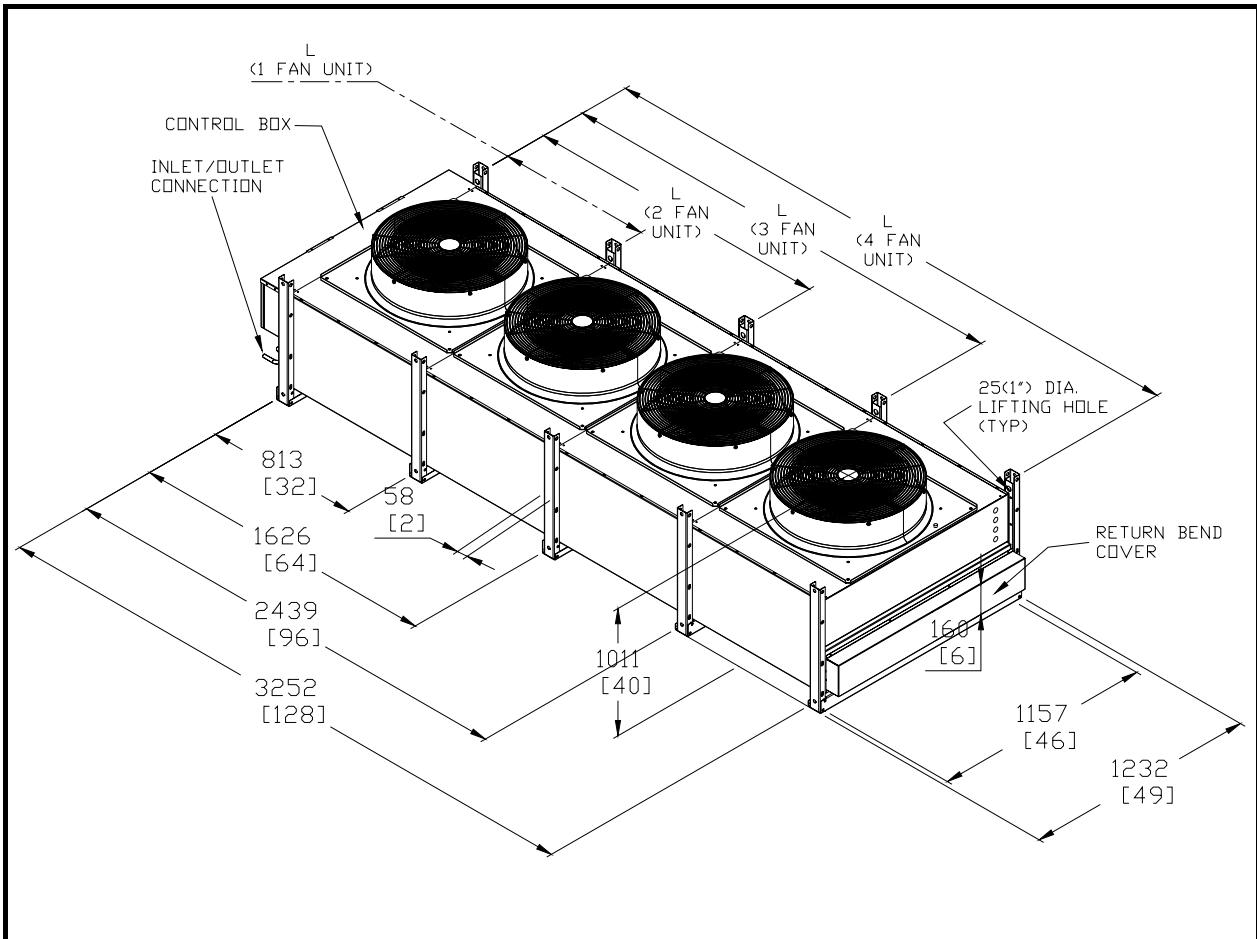
Selections are to be based on standard airflow rate and return air temperature of 35°C / 19.8°C (95°F / 67.7°F) or lesser at sea level.

Model	DX-System	DBIR03V	DBIR07V	DBIR10V	DBIR13V
<b>Total Heat Rejection (Nominal)</b>	MBH (kW)	56.7 (16.6)	118.1 (34.6)	155.0 (45.4)	196.3 (57.5)
<b>35°C (95°F) Ambient</b>	-	DBRC04	DBRC13	DBRC17	DBRC20
<b>37.8°C (100°F) Ambient</b>	-	DBRC06	DBRC13	DBRC17	DBRC20
<b>40.6°C (105°F) Ambient</b>	-	DBRC06	DBRC13	DBRC17	DBRC26
<b>43°C (110°F) Ambient</b>	See Note 1	DBRC08	DBRC17	DBRC20	DBRC30
<b>46°C (115°F) Ambient</b>	See Note 1	DBRC17	DBRC26	DBRC34	DBRC44
<b>49°C (120°F) Ambient</b>	See Note 2	DBRC17	DBRC26	DBRC34	DBRC44
<b>52°C (125°F) Ambient</b>	See Note 3	DBRC20	DBRC30	DBRC40	DBRC44

Notes: 1.) Multiply Total Compressor Power Input by 1.05  
 2.) Multiply Cooling Capacity by 0.9. Multiply Total Compressor Power Input by 1.1  
 3.) Multiply Cooling Capacity by 0.9. Multiply Total Compressor Power Input by 1.2

# REMOTE AIR-COOLED CONDENSERS

## TECHNICAL DATA



Model	Physical Data				Electrical Data							
	Length 'L' mm (inches)	Fans		Approx. Weight kg (lbs)	Motor Qty	RPM		Motor FLA (3-Phase)				
		Qty	Total L/S (CFM)			50Hz	60Hz	380V 50Hz	400V 50Hz	415V 50Hz	460V 60Hz	208V-230V 60Hz
DBRC 04	870 (34¼)	1	3210 (6800)	100 (220)	1	925	1110	2	1.9	1.8	2.7	5.5
DBRC 06	870 (34¼)	1	3210 (6800)	111 (244)	1	925	1110	2	1.9	1.8	2.7	5.5
DBRC 08	870 (34¼)	1	3210 (6800)	122 (268)	1	925	1110	2	1.9	1.8	2.7	5.5
DBRC 10	870 (34¼)	1	3210 (6800)	134 (295)	1	925	1110	2	1.9	1.8	2.7	5.5
DBRC 11	870 (34¼)	1	3210 (6800)	180 (400)	1	925	1110	2	1.9	1.8	2.7	5.5
DBRC 13	1683 (66¼)	2	6420 (13600)	190 (420)	2	925	1110	4	3.8	3.6	5.4	11
DBRC 17	1683 (66¼)	2	6420 (13600)	204 (450)	2	925	1110	4	3.8	3.6	5.4	11
DBRC 20	1683 (66¼)	2	6420 (13600)	265 (583)	2	925	1110	4	3.8	3.6	5.4	11
DBRC 26	2500 (98¼)	3	9630 (20400)	288 (634)	3	925	1110	6	5.7	5.4	8.1	16.5
DBRC 30	2500 (98¼)	3	9630 (20400)	320 (700)	3	925	1110	6	5.7	5.4	8.1	16.5
DBRC 34	2500 (98¼)	3	9630 (20400)	355 (780)	3	925	1110	6	5.7	5.4	8.1	16.5
DBRC 40	3308 (130¼)	4	12838 (27200)	380 (835)	4	925	1110	8	7.6	7.2	10.8	22
DBRC 44	3308 (130¼)	4	12838 (27200)	410 (900)	4	925	1110	8	7.6	7.2	10.8	22

Note: All dimensions are in mm (inches).



# SPECIFICATION GUIDE

---

This specification describes requirements for precision air conditioning system. The system shall be designed to maintain precised temperature and humidity conditions for applications such as computer server rooms, telecommunication facilities, clean rooms, laboratories, etc. The precision environmental control system shall be factory assembled by Dunham-Bush Industries, Malaysia.

## DESIGN REQUIREMENTS

### (A) Direct Expansion (DX) System

- The system shall have a total cooling capacity of \_\_\_\_MBH / \_\_\_\_kW and a sensible cooling capacity of \_\_\_\_MBH / \_\_\_\_kW based on an entering air temperature of \_\_\_\_°F / \_\_\_\_°C DB and \_\_\_\_°F/\_\_\_\_°C WB.
- The system shall be designed based on \_\_\_\_°F / \_\_\_\_°C DB ambient temperature. For low ambient application, the system shall also be designed to operate at \_\_\_\_°F / \_\_\_\_°C DB ambient temperature.
- The unit shall be supplied with \_\_\_\_/\_\_\_\_/\_\_\_\_(Volt/Phase/Hz) electrical service.

### (B) Chilled Water (CW) System

- The system shall have a total cooling capacity of \_\_\_\_MBH / \_\_\_\_kW and a sensible cooling capacity of \_\_\_\_MBH / \_\_\_\_kW based on an entering air temperature of \_\_\_\_°F / \_\_\_\_°C DB and \_\_\_\_°F / \_\_\_\_°C WB.
- The system shall be supplied with chilled water with an entering water temperature of \_\_\_\_°F / \_\_\_\_°C and leaving water temperature \_\_\_\_°F/ \_\_\_\_°C.
- The unit shall be supplied with \_\_\_\_/\_\_\_\_/\_\_\_\_ (Volt/Phase/Hz) electrical service.

## 1 STANDARD FEATURES (ALL SYSTEMS, INDOOR UNIT)

### 1.1 Filters

The system shall be provided with 2 inches (50mm) deep (for model DBIR 03/07V, 08/10W) or 2 inches (50mm) deep (for model DBIR 10/13V, 11,17W) extended surface pleated disposable type filters rated for MERV8 efficiency to ASHRAE 52.2 standard (equivalent to G4). Filters shall be withdrawable from the rear of the unit.

### 1.2 Fan Motor

The system shall be provided with high efficiency EC motor axial fan set.

### 1.3 Evaporator Air Discharge

The system shall be configured for front free-flow discharge air pattern with rear return air inlet. The system shall be supplied with grilles on the cabinet doors for front discharge & rear return air configuration. It also has option of manual configuration air baffle at front discharge outlet to direct the air movement.

### 1.4 Electric Reheat

The electric reheat shall be factory installed with low watt density finned-tubular nickel-plated element heater with overheat safety controls.

### 1.5 Electrical Circuits

The system shall be provided with a factory installed electrical enclosure as per local code requirements. The fan motor(s), compressor(s), electric heaters, humidifier (if applicable) shall have their own circuit breaker and contactor. The electrical circuit shall have provision for user to cut off control power during fire / emergency shutdown

### 1.6 Control System

#### 1.6.1 Controller and display

The unit shall be provided with control system with the following features,

- The control algorithm and parameters shall be stored in flash memory and E<sup>2</sup>PROM of the controller and shall retain even in the event of power failures, without requiring a backup battery
- 4.3" graphical touch terminal with 65k color display
- Built in memory for data logging
- Temperature and humidity controlled
- Configurable by user

# SPECIFICATION GUIDE

---

- Alarm status/display
- Analog input/output display
- Digital input/output status
- Remote start/stop input
- Digital input for customer input alarm
- General alarm output (dry contact)
- Self-diagnostics
- Security password access with multiple access level for advanced settings
- Unit status display with following information:
  - Current room temperature and temperature setpoint
  - Current room relative humidity and relative humidity setpoint
  - System ON/OFF
  - Operating mode (cooling/ heating/ humidifying/ dehumidifying)

## 1.6.2 Alarm Monitoring

When the system is in alarm condition, the system shall activate an audible buzzer and visual alarm message on the terminal display. A digital output (dry contact) shall be closed to indicate the alarm condition. The following alarm conditions shall be monitored by the controller:

- High room temperature
- Low room temperature
- High supply air temperature
- High room humidity
- Low room humidity
- No air flow/loss of air flow
- Sensor failure
- Evaporator fan overload alarm
- Customer interlock alarm
- Unit/ Compressor running hours threshold exceeded
- LAN network disconnected alarm
- High/Low refrigerant pressure alarm (DX models)
- Chilled water flow switch alarm (chilled water models)
- Humidity Alarms
- Under floor water detector alarm (optional)
- Smoke detector alarm (optional)

## 1.6.3 Master-Slave Sequencing Control

When more than one unit is present in the system, master-slave or duty-standby control of this group of units shall be done by just connecting controller of each unit in serial and require no additional controller.

## 2 DIRECT EXPANSION (DX) SPLIT SYSTEMS WITH REMOTE OUTDOOR AIR-COOLED CONDENSER (DBRC MODELS)

### 2.1 Compressor

Compressor shall be mounted on the base via vibration isolators. Compressor shall be charged with polyester oil and designed for use with R410A refrigerant.

### 2.2 Refrigeration Circuits

The refrigeration system shall be of the direct expansion type with one hermetic scroll compressors. All refrigeration circuit shall be pre-piped with copper tubing and include expansion valve with external equalizer, filter dryer, sight glass, refrigerant service valves, pressure fittings of pressure sensor and charging/access ports in each circuit.

### 2.3 Evaporator Coil

The evaporator coil shall be of draw through air design for uniform air distribution. The evaporator coil shall be quality construction of seamless copper tube, mechanically bonded to hydrophilic aluminum fins with galvanized coil plates. The coil shall be factory leak and pressure tested to 650psig (45 bar) for R410A system and the refrigeration system shall be sealed prior to shipment. A galvanized and painted drain pan shall be provided to cover the entire coil area. The drain pan shall be designed to incorporate sloped gutter for complete condensate removal.

# SPECIFICATION GUIDE

---

## 2.4 Remote Outdoor Air-Cooled Condenser (DBRC Models)

The remote condenser shall be constructed from sturdy heavy gauge steel sheets with epoxy powder coated oven baked, factory standard beige color to provide a durable finish.

The remote condenser shall include direct driven propeller fans, condenser coil, fan guard, thermally protected rated IP55 motors, integral factory wired and tested control panel. The condenser coil shall be quality construction of seamless copper tube, mechanically bonded to aluminum fins with galvanized coil plates. The coil shall be factory leak and pressure tested to 650psig (45 bar) for R410A system and the refrigeration system shall be sealed prior to shipment.

The evaporator and condenser sections shall ship with a dry-nitrogen holding charge ready for field refrigerant charging.

## 3 CHILLED WATER (CW) SYSTEMS

### 3.1 Chilled Water Coil

The evaporator coil shall be of draw through air design for uniform air distribution. The chilled water coil shall be quality construction of seamless copper tube, mechanically bonded to hydrophilic aluminum fins with galvanized coil plates. The coil shall be factory leak and pressure tested to 450psig (31 bar) and sealed prior to shipment. Copper pipe for brazed connection shall be provided as standard. A galvanized and painted drain pan shall be provided to cover the entire coil area. The drain pan shall be designed to incorporate sloped gutter for complete condensate removal.

### 3.2 Chilled Water Control

The water circuit shall include 3-way forged brass valve and modulating actuators. The microprocessor positions the valve in response to room condition. Cooling capacity shall be controlled by bypassing chilled water around the coil.

## 4 OPTIONS

### 4.1 Stainless Steel Drain Pan

A stainless-steel condensate drain pan shall be provided for the evaporator/chilled water coil in lieu of standard galvanized and painted drain pan.

### 4.2 Steam Generating Humidifier

Humidifier shall be factory installed inside the unit. The humidification system shall be an electrode cylinder type, complete with fill valve, drain valve, adjustable humidity output and automatic flush cycle activated on demand from the microprocessor control system.

### 4.3 Liquid Line Solenoid Valve (DX Systems only)

A factory fitted liquid line solenoid valve shall be provided for each refrigeration circuit as an option.

### 4.4 Hydrophilic or Copper Fin for Condenser Coil (DBRC)

Condenser coils shall be provided with hydrophilic or copper fins in lieu of aluminum.

### 4.5 Black Color Epoxy Powder Coating for Remote Condenser (DBRC)

The remote condenser DBRC shall be epoxy powder coated oven baked black color paint in lieu of standard beige color.

### 4.6 Under Floor Water Detector

A remote water leak detector shall be factory provided for field installation. When water leak is detected, cooling mode of the unit is off.

### 4.7 Smoke Detector

A smoke detector shall be supplied loose for remote mounting. The unit shall shut down when smoke alarm is triggered.

### 4.8 Low Ambient Kit

Outdoor fan cycling for better performance during low ambient.

### 4.9 Remote Temperature Sensor

The sensor is used to monitor the temperature of other devices in the equipment room, and the temperature can be used as the control temperature of the unit.



#### Malaysia

Lot 5755-6,  
Kidamai Industrial Park,  
Bukit Angkat,  
43000 Kajang,  
Selangor, Malaysia

Tel: +603-8924 9000  
Fax: +603-8739 5020

#### China

No. 1 Dunham-Bush Road,  
Laishan District,  
Yantai,  
Shandong Province,  
China 264003

Tel: +86-535-739 7888  
Fax: +86-535-739 7999

#### United Kingdom

8 Downley Road,  
Havant,  
Hampshire,  
England PO9 2JD

Tel : +44-23-9247 7700  
Fax: +44-23-9245 0396

#### United States of America

1800 SE 38th Avenue,  
Homestead,  
Florida 33035  
United States of America

Tel: +1(786)-800 9999  
Fax: +1(786)-527 3539

#### United Arab Emirates

Office # 2606,  
Fortune Executive Towers,  
Cluster T1, Jumeirah Lake Tower  
Dubai, UAE

Tel: +971-4-443 9207  
Fax: +971-4-443 9208

#### South Africa

No. 57 Sovereign Drive  
Route 21 Corporate Park  
Irene, Pretoria  
South Africa

Tel: +27-12-345 4202  
Fax: +27-12-345 4203

#### India

Unit No : 804-805 , 8th Floor,  
Spaze Platinum Tower,  
Sohna Road, Sector-47, Gurgaon  
Haryana-122018, India

Tel: +91-124-414 4430

#### Indonesia

The Boulevard Office,  
3F2 Jl. Fachrudin No.5,  
Kp. Bali, Tanah Abang  
Jakarta Pusat - 10250, Indonesia

Tel: +62-21-2123 1392

#### Thailand

48/39 Soi Praditmanutham 19  
Praditmanutham Road,  
Lat Pharo, Bangkok 10230  
Thailand

Tel: +662-002 2125

#### Singapore

2 Kallang Pudding Road  
#07-07 Mactech Building  
Singapore 349307

Tel: +65-6842 2012  
Fax: +65-6842 2013

#### Vietnam

10th Floor, Nam A Bank Tower,  
201-203 Cach Mang Thang 8 Street,  
Ward 4, District 3, Ho Chi Minh City,  
Vietnam

Tel: +84-8-6290 3108  
Fax: +84-8-6290 3109

**DUNHAM-BUSH®**

info@dunham-bush.com  
www.dunham-bush.com



Products that perform...By people who care

Manufacturer reserves the right to change specifications without prior notice.

M-S-0707A-0223